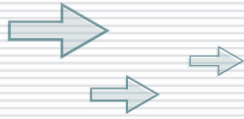


冷热冲击试验机(二箱移动式)-KTC气体式
(Two Chambers Design of Moveable) Thermal Shock Tester -- Air Type



冷热冲击试验机(二箱移动式)-KTC 气体式 (Two Chambers Design of Moveable) Thermal Shock Tester -- Air Type



Advanced Technology 科技创新技术



Laboratory class

高规格专业设计，符合国际规范要求。

Advanced specification and professional design, compatible with



超低除霜次数 (100cycle)

实验效益大幅提升

Actual benefits are greatly enhanced



High load 设计

满足待测品，较大负载容量

Providing larger loading capacity to satisfy testing requirements



多元化 Labview 测试整合

自动切换庆声与 Labview 通讯架构

Auto-switch between KSON and Labview communication architecture



精灵快速键

人性化快速进入选单

User-friendly menu with a quick access



网络记录器

测试结果采e化管理

E-management of testing results



贴心安全 & 维护设计

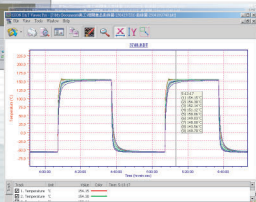
实验结束，自动回高温测试区 & 维护讯息
即时掌控

Automatic restore to high temperature after the experiment, to protect the tested item and maintain instant message control



▲ 除霜时间 defrosts the time ▲

彩色
触控式控制器
Touch Panel



Cooling shock chamber
预冷低温冲击区



Heat shock chamber
预热高温冲击区

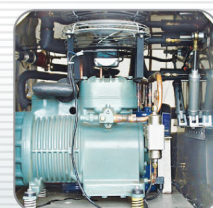
K T C 适用 相关 规范 对照 表 The reference table of related TC compatible regulations

--- 不符合此规格(LN2 function can be added) ◎ 符合此规格(Comply with this specification) ※ 可增加LN2功能(LN2 function can be added)

试验规范 (Experimental standard)	驻留温度(°C) (exposure temp.)			驻留温度时间(Min) (exposure time)		覆归时间 (recovery time)	周期或次数 (Cycle or number of times)	试验起始点 (Experiments the initial station)	备注 (Note)	适用机台型号 KTC-(B/C/D)		
	高温 (High temperature)	室温 (Room temperature)	低温 (Low temperature)	高温/低温 (High temperature/low temperature)	室温 (Room temperature)					4T	3T	2T
MIL-STD-883E (Method No.1010.7)	+10 +85 0					含驻留时间& 转换时间≤15min	最少 10次	低温 或 高温	Temperature Cycling (转换时间<1min) 实验过程若中断 超过总实验之1/10 次则实验须重做	◎	◎	---
	+15 +125 0	----		≥10min ≤15min	----					◎	◎	---
	+15 +150 0									◎	◎	---
	+15 +150 0									◎	※	---
JIS C 0025 IEC 68-2-14 GB 2423.22	±2 +70					为驻留时间 之1/10	5 cycle 除非有 其他规格	低温	Auto Transfer time 不超过30 sec 小试件 Transfer time 不超过10 sec	◎	◎	◎
	±2 +85	----		3hr 2hr 1hr 30min 或无定义则 以3hr定义	----					◎	◎	◎
	±2 +100									◎	◎	◎
	±2 +125									◎	◎	※
										◎	※	---
										◎	---	---
IPC 2.6.7	+5 +85 -0					2 Min 以内	100 cycle	高温 (试验结束 点在高温)	Transfer time 不超过2 min	◎	◎	◎
	+5 +105 -0	----		15 Min	----					◎	◎	※
	+5 +125 -0									※	※	---
	+5 +150 -0									※	※	---
Bellcore GR-1221-CORE	±2 +70					≥15min	500 cycle OR 1000cycle			◎	◎	◎
	±2 +85	----								◎	◎	◎
JESD22 A104-A	+10 +125 -0					含驻留时间& 转换时间≤15min	抽10次 可接受; 1000次 合格	Temperature Cycling (转换时间<1min) 实验过程若中断 超过总实验之1/10 次则实验须重做		◎	◎	◎
	+10 +85 -0	----		≥10min ≤15min	----					◎	◎	---
	+10 +125 -0									◎	◎	---
	+10 +150 -0									◎	※	---



高效率板式冷热交换器
High efficiency SWEP
heat exchanger



半密闭式大型压缩机组
Semi-Hermetical professional
compressors

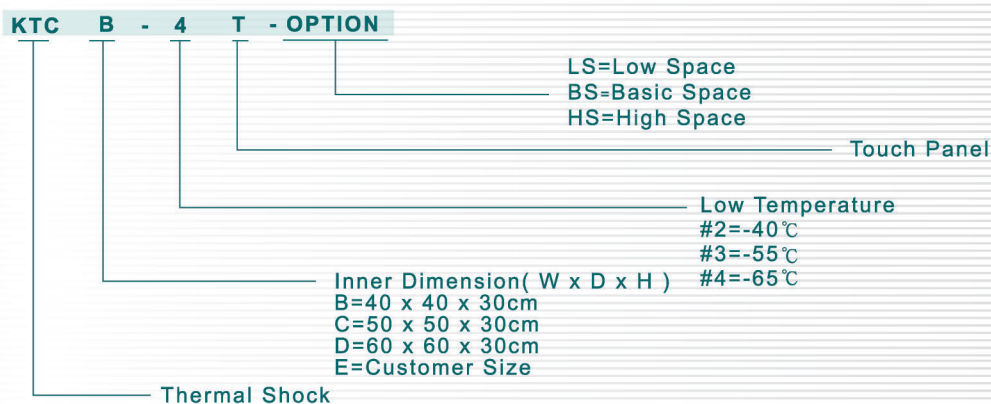
冷热冲击试验机(二箱移动式)-KTC气体式规格表 (Two Chambers Design of Moveable)Thermal Shock Tester -- Air Type Specification table

Model		KTCB-2	KTCC-2	KTCD-2	KTCB-3	KTCC-3	KTCD-3	KTCB-4	KTCC-4	KTCD-4
结构 (Structure)		双室设计(热室或冷室)Two Chambers Design (The Hot Chamber Or The Cold Chamber)								
气门装置 (Damper Device)		强力气体驱动阻尼器Forced Air Drived (Damper)								
内箱材料 (Interior Material)		SUS#304 不锈钢 (Stainless Steel #304)								
外箱材料 (Exterior Material)		SECC+ 9493粉体涂装								
测试栅盘 (Railing Frame)		不锈钢网架 (Stainless Steel Material Plate Or Net)								
冷冻系统 (Refrigeration)		二元式(Cascade Refrigeration System)								
冷却方式 (Cooling Method)		Water			Water			Water		
环境温度 (Ambient Temperature)		5℃~ 30℃								
温度范围 Temp Range	预热温度 (Preheating Temperature)	+60.00℃~ +200.00℃			+60.00℃~ +200.00℃			+60.00℃~ +200.00℃		
	预冷温度 (Precooling Temperature)	-10.00℃~ -60.00℃			-10.00℃~ -80.00℃			-10.00℃~ -80.00℃		
	高温冲击 (H.T. Shocking)	+60.00℃~ +150.00℃			+60.00℃~ +150.00℃			+60.00℃~ +150.00℃		
	低温冲击 (L.T. Shocking)	-10.00℃~ -40.00℃			-10.00℃~ -55.00℃			-10.00℃~ -65.00℃		
温度分布偏差(Temperature Variation℃)		±2.00℃以内(Under±2.00℃)or High Temp +5 / +0 ; Low Temp -0 / -5								
模拟负载(IC) (Simulated Load IC (kg))		2.5	5.0	7.5	2.5	5.0	7.5	2.5	5.0	7.5
恢复时间 Recover Time	高温冲击2箱 (HT IN 2-Zone)	-40.00℃~ +150.00℃/5min			-55.00℃~ +150.00℃/5min			-65.00℃~ +150.00℃/5min		
	低温冲击2箱 (LT IN 2-Zone)	+150.00℃~ -40.00℃/5min			+150.00℃~ -55.00℃/5min			+150.00℃~ -65.00℃/5min		
预热时间 (Preheating Time)		50min	45min	45min	50min	45min	45min	50min	45min	45min
预冷时间 (Precooling Time)		60min	60min	80min	75min	75min	80min	75min	75min	80min
控制系统 Control System	温度感知器 (Sensor)	PT 100 Ω X 3								
	控制器 (Controller)	IPC Based Touch Panel								
	设定范围 (Setting Range)	Temperature:-70℃+200℃ / Time:0h 1m~9999h59m / Cycle 1~9999 Cycle								
	解析度 (Resolution)	Temperature : 0.01℃ / Time : 1 min								
	输出型式 (Output Mode)	PID+PWM+SSR 控制模式(Control Method)								
扩充的特色(Additional Feature)		图片连结DC/AC 介面/高精度(12 BIT D/A)转换器/YOKOGAWA(横河)温度纪录器 /关机记忆 Photo Coupler Dc/ac Interface / High Precision (12 Bit D/A) Converter / Yokogawa Temperature Recorder / Power-off Memory								
安全系统 (Security System)		接地泄漏断路器/无熔丝断路器/预热区温度保护器/预冷区温度保护器/冷媒压力保护区/无压缩气体保护器/无冷水保护器/压缩机、风扇、马达过热保护器/防雷击保护器/RC脉冲保护器/保险丝/在故障侦测介面的故障指示灯/相位保护器 控制器内部诊断：资料传输故障/感知器故障/第一阶段过热保护器/低温保护器/温度上限 控制器外部诊断：装置故障状况指示 SHOCK-TC+会显示故障原因及故障排除的参考资料 Earth Leakage Breaker/no Fuse Breaker/preheating Zone Temperature Protector/precooling Zone Temperature Protector/refrigerant Pressure Protector/compressed Air Lack Protector/cooling Water Lack Protector/compressor, Fan, Motor Overload Protector/thunder Protector/rc Pulse Protector/fuse/error Indication Lamp In Error Detect Interface/phase Protector Controller Internal Diagnose : Data Transfer Error/sensor Error/1st Stage Overheat Protector/low Temperature Protector/temperature High Limitation Controller External Diagnose : Device Error Condition Indication Shock-tc2005+may Display Error Reason And Reference Of Trouble Shooting								

※以上规格, 请以实体报价为主, 最终解释权归本公司所有
For Above Accessories, Their Actual Specifications May Vary. The Right Of Final Interpretation Belongs To Our Company.

型号 (Model)	尺寸(Size) (W*D*H)cm	满载电流MAX. (Full load current MAX.)	功率KW (Power KW)	水塔 (Water Tank)	水管进出管径 (Water Pipe Turnover Caliber) (入水压力范围1~3.5Kg/cm ²)
KTCB-2TBS	内箱: 40x40x30cm 外箱: 136x203x205cm	380V 3相 32A	21.1KW	5吨	1 1/4英寸
KTCB-3TBS	内箱: 40x40x30cm 外箱: 136x203x205cm	380V 3相 32A	21.1KW	5吨	1 1/4英寸
KTCB-4TBS	内箱: 40x40x30cm 外箱: 136x203x205cm	380V 3相 34A	22.1KW	8吨	1 1/2英寸
KTCC-2TBS	内箱: 50x50x30cm 外箱: 146x233x220cm	380V 3相 44A	29.1KW	8吨	1 1/2英寸
KTCC-3TBS	内箱: 50x50x30cm 外箱: 146x233x220cm	380V 3相 44A	29.1KW	8吨	1 1/2英寸
KTCC-4TBS	内箱: 50x50x30cm 外箱: 146x233x220cm	380V 3相 51A	33.9KW	10吨	1 1/2英寸
KTCD-2TBS	内箱: 60x60x30cm 外箱: 162x243x220cm	380V 3相 43A	28.0KW	8吨	1 1/4英寸
KTCD-3TBS	内箱: 60x60x30cm 外箱: 162x243x220cm	380V 3相 44A	29.1KW	8吨	1 1/2英寸
KTCD-4TBS	内箱: 60x60x30cm 外箱: 162x243x220cm	380V 3相 54A	35.3KW	10吨	1 1/2英寸

Model Code



www.kson-cn.com

昆山庆声电子科技有限公司

昆山 江苏省昆山市周市镇339省道518号

TEL: (0512)57764900

FAX: (0512)57764100

E-mail: kson@kson.cn

设备咨询与售后服务

新设备询价，快扫公众号二维码



-营业项目-

恒温恒湿机（标准型/超低湿型/等温型/太阳能专用/光显示器专用）/KESS应力筛选试验机/冷热冲击机（三箱气体式/二箱移动式）/热应力复合机/自然对流试验机/恒温恒湿室/高压加速寿命试验机/复合型环境试验机/智慧型高阻计/超高阻计/精密温湿度计/切换式超高电阻箱/导通电阻量测系统/数位收集系统/高速离子迁移量测系统/表面绝缘电阻量测系统/e化管理系统/预烧室/实验室机台管理系统/