

表面绝缘电阻量测系统(SIR-2006)
Surface Insulation Resistance Measurement System



表面绝缘电阻量测系统(SIR-2006) Surface Insulation Resistance Measurement System

Advanced Technology 科技创新技术



全程侦测迁移状况

完整侦测各轨发生迁移状况. 不间断持续监控
Completely detecting of migration in each track, available with uninterruptedly continuous monitoring



各层设定不同测定条件

各层弹性设定(群组 & 时间 & 电流保护 & 泄漏电流侦测点...等)

Flexible setting for each layer (group, time, current protection and detection point of current leakage, etc.)



超大扩充200channel

超值标配40channel超大扩充可到200channel

Value-added standard configuration of 40 channels, expandable to 200 channels



数据即时曲线化显示

即时读取时间/电阻值/温度/湿度之读值

Real-time reading of time, resistance value, temperature and Humidity



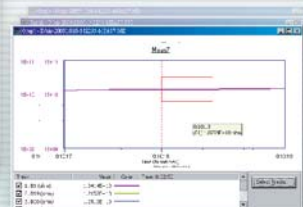
轨道程式设定画面
Setting scen for channel program

转换EXCEL报表
Conversion to Excel report

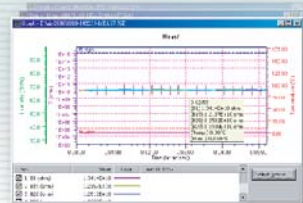


多轨量测结果同步显示画面
Simultaneous display of multi-channel measuring results

SIR系统控制主画面
Main scene of SIR system control

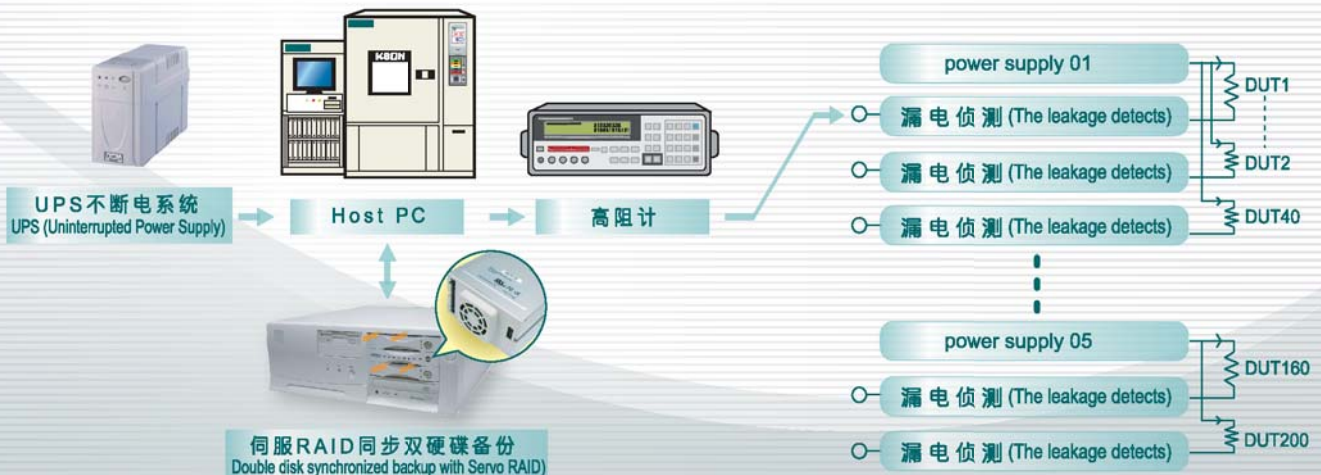


(新架构)
高速泄漏电流侦测
应用范围:
离子迁移、CAF
(New infrastructure)
High-speed detection of current leakage
Applicable scope - ion migration, CAF



正常绝缘电阻纪录
应用范围-绝缘电阻
Recording of normal insulation
Applicable scope- insulation
resistance resistance

©SIR系统架构图 (SIR system architecture diagram)



表面绝缘电阻量测系统规格表 Surface Insulation Resistance Measurement System Specification

规格 Specification	表面绝缘电阻量测系统(SIR-2006) Surface Insulation Resistance Measurement System(SIR-2006)	
外型尺寸 Exterior dimension	600 × 1731 × 850 mm (W*H*D)(包含突出部份)	
电气特性 (Electrical properties)	标准轨道 Standard channel	40Channel (最大 200 Channel)
	最大控制 Maximum control group	5 Group
	试验设定 Test setting	群组设定 Group setting (START / STOP)
	测定电压范围 Measurement voltage scope	0.5V~ 250V(0.5~200V/0.1Step, 200V以上/1V Step)
	电阻量测范围 Resistance measurement range	$1 \times 10^6 \Omega \sim 1 \times 10^{13} \Omega$
	泄漏电流测定范围 Measurement scope of leakage current	10pA~500uA
	泄漏电流测定速度 Measurement rate of leakage current	1us
	资料取样速度 Data sample rate	5 sec
	Bias Supply 方式 Bias Supply mode	1 Power Supply → 40 CH(群组设定启动) 1 Power Supply → 40 CH(Group setting startup) 若任1CH短路时, Alarm显示, 其他CH继续执行试验 If any 1CH is in short circuit, Alarm displayed, while other CHs continue testing.
	电压设定 Voltage setting	Bias & Test 电压 → 40 CH(Bias正负电压/test正电压设定) Bias & Test voltage → 40 CH(Setting of bias positive & negative voltage test/positive voltage setting)
最大试验时间 Maximum test time	9999Hr	
T/H 量测 (T/H measurement)	资料读取&link台数 Data reading & link number of machines	同时读取/记录各Chamber温湿度值/最大3台Chamber Simultaneously read/record the maximum T/H values of each Chamber/maximum three Chambers
	测试时间调整 Adjustment of test time	测试时间运转中延长/缩短(1Min ~ 9999Hr任意调整) Test time can be adjusted from 1Min - 9999Hr during the test process
量测线材 (Measurement wire)	Bias Cable断线检出功能 Bias Cable breakage detection	断线&短路检出(量测资料经由程式判断) Breakage & short circuit detection (the measured data is judged by the program)
	Cable线材 Cable wire	同轴铁弗龙披覆纯银导线 Coaxial Teflon-coated pure silver conduit
资料收集 (Data collection)	收录资料应用 Application of collection data	16种应用资讯 16 types of application information
	离子迁移资料分析 Analysis of ion migration data	记录迁移 发生/结束时间 Recording of the occurrence/end time of migration
	EXCEL报表转换 Excel report conversion	设定条件资料、量测资料、迁移资料完整转换成EXCEL档案 Set condition data, measurement data and migration data to be completely converted as Excel files
电源 Power source	AC110V&220V ± 10%, 50/60Hz	
环境温度 Environmental temperature	+5℃~+30℃	
标 配 standard equipments	量测探棒、量测夹具、PCB放置治具、验证用比对电阻(5种不同高阻值1MΩ ~ 10GΩ) Measurement probe and Alligator Clips, PCB placement fixture, and resistances (five big resistances of 1MΩ ~ 10GΩ) for comparison and verification	

※测试电压(Test voltage): 50dc时, 在测试导线末端检测值(At 50dc, the value measured at the end of the test conduct).

※以上规格, 请以实体报价为主, 最终解释权归本公司所有

For Above Accessories, Their Actual Specifications May Vary. The Right Of Final Interpretation Belongs To Our Company.

标准电脑配备 Computer to be equipped (IBM 相容个人电脑)

- C P U: Intel双核心以上
- R A M: 1GB 记忆体以上(1GB of memory or more)
- Hard DISK: 2个80GB硬碟以上(Two hard disks with the capacity of 80GB or more)
- 作业系统(OS): Win Xp单机版以上(At least Windows Xp standard edition)
- 显示器(Monitor): 17寸TFT萤幕(17" TFT LCD)
- 网路卡(NIC): 10/100M
- 烧录器(Burner): DVD烧录机
- 资料保护(Data protection): 伺服器RAID架构磁碟阵列双硬碟资料同步备份(Sever Raid dual hard disk data synchronized backup)
- U P S: 不断电系统可持续30分钟以上(UPS can sustain for at least 30 minutes)

www.kson-cn.com

昆山庆声电子科技有限公司

昆山 江苏省昆山市周市镇339省道518号

TEL: (0512)57764900

FAX: (0512)57764100

E-mail: kson@kson.cn

设备咨询与售后服务

新设备询价，快扫公众号二维码



-营业项目-

恒温恒湿机（标准型/超低湿型/等温型/太阳能专用/光显示器专用）/KESS应力筛选试验机/冷热冲击机（三箱气体式/二箱移动式）/热应力复合机/自然对流试验机/恒温恒湿室/高压加速寿命试验机/复合型环境试验机/智慧型高阻计/超高阻计/精密温湿度计/切换式超高电阻箱/导通电阻量测系统/数位收集系统/高速离子迁移量测系统/表面绝缘电阻量测系统/e化管理系统/预烧室/实验室机台管理系统/