

光显示器专用冷热冲击机 - FPD KSK  
FPD Thermal Shock Tester

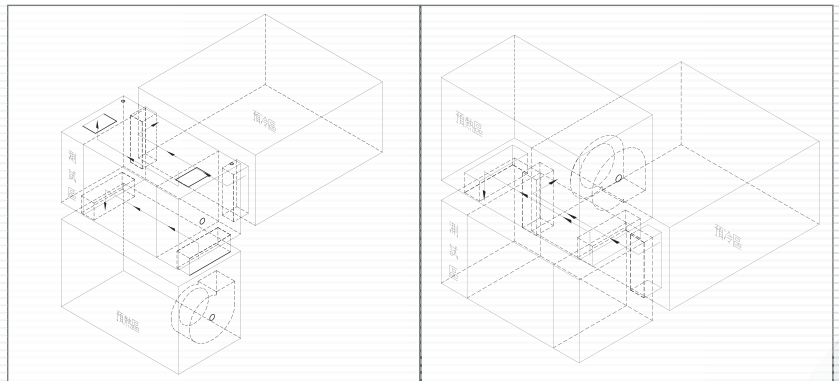
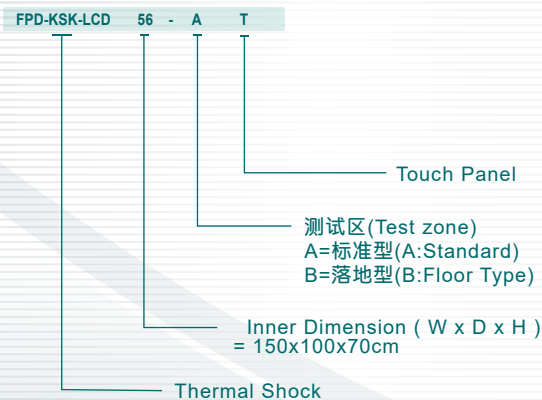


规格表(Specification Table):

| 规格(Specification)                     | FPD-KSK-LCD56-AT (标准型)  | FPD-KSK-LCD56-BT (落地型)   |
|---------------------------------------|---|--|
| 结构 (Structure)                        | 预冷箱(Pre-cooling Zone) 预热箱 (Pre-Heating Zone)<br>测试箱 (Testing Zone)固定类型的物体测试2箱式<br>(Table 2-Zonetest For Stationary Object Test) |  |
| 内箱尺寸(Inside Dimensions(W · D · H)cm)  | 150X100X70  |  |
| 外箱尺寸(Outside Dimensions(W · D · H)cm) | 252X255X218   | 251X267X220  |
| 内容积(Inside Capacity)/公升(Litre)        | 1050L   |  |
| 气门装置 (Damper Device)                  | 强制的空气装置气门(Forced air Damper)  |  |
| 内箱材料 (Interior Material)              | SUS#304 不锈钢   |  |
| 外箱材料 (Exterior Material)              | 电镀锌版+#304不锈钢+ 9493粉体涂装 (SECC+SUS#304+#9493Power Coating )   |  |
| 测试栅盘 (Railing Frame)                  | 不锈钢网架 (Stainless Steel Material Plate Or Net )  |  |
| 冷冻系统 (Refrigeration)                  | 二元式(Cascade Refrigeration System )  |  |
| 冷却方式 (Cooling Method)                 | 水冷 (Water Cooling)  |  |
| 温度范围                                  | 预热温度 (Preheating Temperature)   | 60℃~150℃   |
|                                       | 预冷温度 (Precooling Temperature)   | -10℃~-45℃  |
|                                       | 高温冲击 (H.T. Shocking)  | +60℃~85℃   |
|                                       | 低温冲击 (L.T. Shocking)  | 0℃~-30℃  |
| 预热时间 (Preheating Time)                | 40min   |  |
| 预冷时间 (Precooling Time)                | 50min   |  |
| 温度分布均匀度 (Temperature Uniformity)      | ±2.00℃以内(Under±2.00℃ )  |  |
| 模拟负载(IC) (Simulated Load IC (kg)      | 200kg(含台车60kg)  |  |
| 覆盖时间                                  | 高温冲击二箱 (HT in 2-zone)   | -30℃~+85℃/5min   |
|                                       | 低温冲击二箱 (HT in 2-zone)   | +85℃~-30℃/5min   |
| 驻留时间(Dwell time)                      | 30min   |  |
| 控制系统                                  | 温度感知器 (Sensor)  | PT 100×3   |
|                                       | 控制器 (Controller)  | IPC Based Touch Panel  |
|                                       | 设定范围 (Setting Range)  | Temperature:-70℃~+200℃ / Time: 0H1min~9999h 59min / Cycle: 9999Cycle |
|                                       | 解析度 (Resolution)  | Temperature: 0.01℃ / Time:1 min                                      |
|                                       | 输出型式 (Output Mode)  | PID+PWM+SSR 控制模式(Control Method)                                     |
|                                       | 扩充性能(Additional Capability)   | e化管理系统   |

※以上规格, 请以实体报价为主 ( For Above Accessories, Their Actual Specifications May Vary )

Model Code



▲ 标准型测试区图示 ▲

▲ 落地型测试区图示 ▲

